

安装附件

Mounting Adapter

各种安装附件对传感器的频率特性有很大影响，请予以重视，尤其要特别注意螺钉的尺寸。

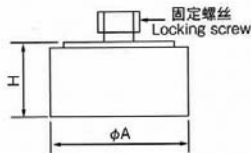
注：订货前请确认螺钉尺寸

We offer various range of mounting adapters. Use the adapter best suited to your intended application, and give careful consideration to the influence on the sensor's frequency characteristics.

Note : Check the screw size before placing an order.

磁吸附装置

由于可以简单地安装在磁性体上，使加速度传感器携带方便，本公司的磁吸附装置对加速度传感器的高域特性没有影响。



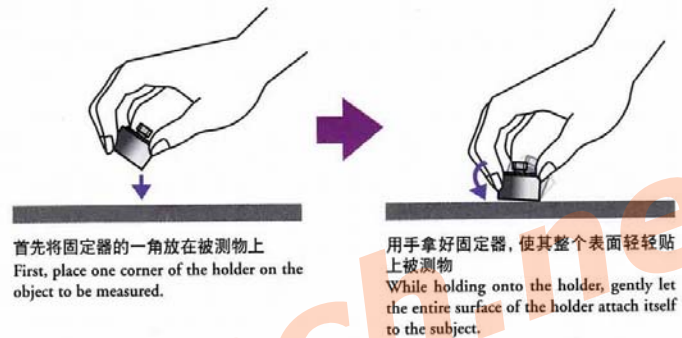
【注意】磁吸附装置吸力大，从10mm距离吸附时会给传感器1000m/s以上的冲击加速度，因此会引起传感器故障，应将磁吸附装置的端部与对象物相对后不能放手。如图所示：首先将一边轻轻地对着对象物，不松手而使其慢慢的吸附上。

The magnetic holder attaches easily to the surface of objects that have magnetic properties, and is very useful if you want to move your sensor from one place to another without permanently mounting it. Our magnetic holders will not adversely affect the high frequency of our accelerometers.

【Caution】 Our magnetic holders are powerful; if you slap the holder onto a surface even from a distance of 10 mm away, the magnetic attraction will be so strong that the holder will slam onto the metal and subject the sensor to an acceleration shock of 10,000 m/s² or greater that may damage the sensor. Once the edge of the holder touches the surface, keep your hand on the holder and lower it gently into place.

Magnetic holders

●磁力固定器的吸附方法 Attaching the magnetic holder



首先将固定器的一角放在被测物上
First, place one corner of the holder on the object to be measured.

用手拿好固定器，使其整个表面轻轻贴上被测物
While holding onto the holder, gently let the entire surface of the holder attach itself to the subject.

型号 Model name	尺寸 A×H (mm) Dimensions A×H	吸附力 (N) Attaching force	最高使用温度 (°C) Max. usable temp.	基座 Ground	安装螺钉 Mounting screw		
					规格	长度	深度
① MH-09A	φ9×5	4	-20~+100	非绝缘 Non-insulated	M3 螺丝 Male	长 1.5 Length 1.5	
② MH-20	φ20×10.5	80	-20~+100	非绝缘 Non-insulated	M6 螺母 Female	深 5.5 Depth 5.5	
③ MH-24	φ24×14	120	-20~+100	非绝缘 Non-insulated	M6 螺母 Female	深 6.5 Depth 6.5	
④ MH-201R	φ20×11	80	-20~+80	绝缘 Insulated	M6 螺丝 Male	长 4 Length 4	
⑤ MH-241R	φ24×12	120	-20~+80	绝缘 Insulated	M6 螺丝 Male	长 4 Length 4	

绝缘螺钉

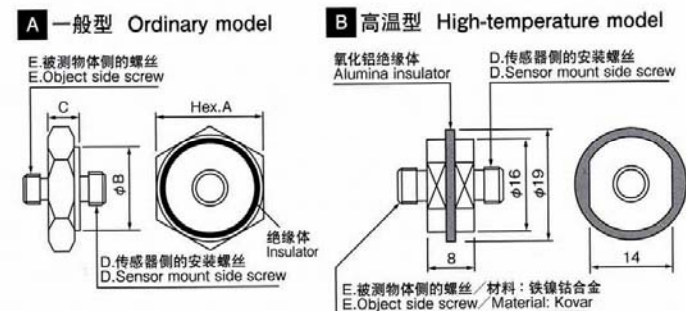
由于产生大的电气噪声的马达等测定时，传感器与被测定物表面之间要电绝缘，以防混入接地环路噪声。

【注意】拧紧扭矩过大可使绝缘螺栓断裂，要用标准拧紧扭矩安装。

Insulation studs are generally used for measurements of motors that emit high-level electric noise. The insulation between the sensor and the object surface prevents ground loop noise from entering.

【Caution】 Applying excessive tightening torque may cause damage to the bonded portions of the insulation stud. Attach insulation studs with standard tightening torque.

Insulation studs



型号 Model name	A Hex (mm)	B 安装面 (mm) mounting surface	C 厚度 (mm) Thickness	D 传感器侧安装螺丝 (mm) Sensor mount side screw		E 被测物侧的螺丝 (mm) Object side screw		使用温度范围 (°C) Usable temperature range	标准扭矩 (N·m) Standard tightening torque	形状 Shape
				规格	长度	规格	长度			
⑥ RS-121A	12	9	5	M3	长 1.5 Length 1.5	M3	长 1.5 Length 1.5	~+120	0.6	A
⑦ RS-171B	17	14	5	M4	长 4 Length 4	M4	长 4 Length 4	~+120	1.6	A
⑧ RS-171D	17	14	5	M6	长 4 Length 4	M6	长 4 Length 4	~+120	5	A
⑨ RS-14D-H	14 (φ 19)	16	8	M6	长 4 Length 4	M6	长 4 Length 4	-196~+400	4.9	B

3轴立方体传感器用安装座

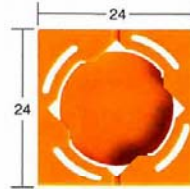
Mount base for triaxial cubic sensor

⑩ SA12ZSC-02 (5pcs)

对角 14.2mm 的立方体传感器专用的粘接台座

Expendable bonding mount for 14.2-mm cubic sensor

材质: ABS树脂 Material: ABS 一件叠板包括5片 One pack contains 5 pieces.
适合传感器 Sensors adapted: SA11ZSC-TI, SA12ZSC-TI, 3511A1, 3512A1



粘接螺栓

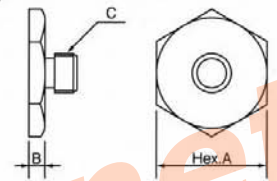
Bonding studs

将加速度传感器粘接安装时, 要防止传感器本体上的粘接剂流入螺孔, 粘接螺栓可用于瞬间粘接剂等来安装于被测定物上。

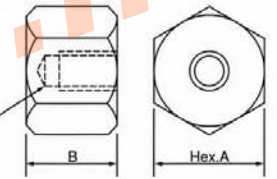
Bonding studs eliminate the need to apply adhesive directly to the sensor and risk blocking or fouling the screw holes. Bonding studs are attached to the subject by cyanoacrylate instant adhesive, or other adhesive.

型号 Model name	A Hex (mm)	B 厚度 (mm) Thickness	C 传感器安装螺丝 (mm) Sensor mounting screw	标准拧紧扭矩 (N·m) Standard tightening torque	外形 Shape
⑪ BS-12A	12	2	M3 长 1.5 Length 1.5	0.6	A
⑫ BS-17D	17	2	M6 长 4 Length 4	5	A
⑬ N14-M6-S	14	10	M6 深 7 Depth 7	5	B

A 外螺纹型 Male screw model



B 内螺纹型 Female screw model



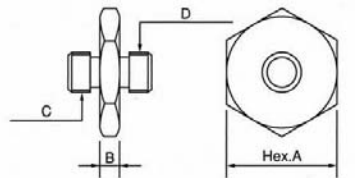
Screw conversion studs

转换螺栓

用于被测定物的螺丝与加速度传感器螺丝不合同时

These are used in cases where the subject's screw tap and the accelerometer's screw do not match one another.

型号 Model name	A Hex (mm)	B 厚度 (mm) Thickness	C 螺丝 (mm) Screw	D 螺丝 (mm) Screw	标准拧紧扭矩 (N·m) Standard tightening torque
⑭ MS-12A	12	3	M3 长 1.5 Length 1.5	M3 长 1.5 Length 1.5	0.6
⑮ MS-17DF	17	3	M6 长 4 Length 4	10-32 长 3 Length 3	3



绝热螺栓

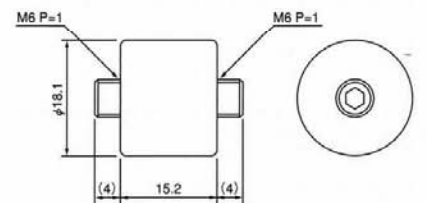
Heat-insulating stud

⑯ HRS-18D

用于隔断从被测定物表面传导到加速度传感器的热量, 但仍要注意辐射、对流和热传导。

This stud is used to block the conduction of heat from the subject to the accelerometer; however, please be aware of radiant heat, convection and heat conduction effects.

本体材质: 低热导率陶瓷 (导热率 1.7W/m·°C) Body material: Low heat-conducting ceramic (1.7W/m·°C)
螺丝材质: 不锈钢 Screw material: stainless steel 最大使用温度: 400°C Maximum usable temperature: 400°C



探触棒

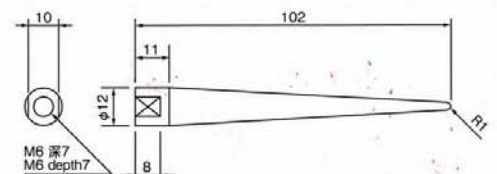
Hand probe

⑰ DR102-M6

用于不能安装加速度传感器的狭窄场所的测定

Used when taking readings of locations too confined to permit the mounting of an accelerometer.

材质: 不锈钢 Material: stainless steel 螺丝: M6, 深: 7mm Screw: M6 depth 7mm



Mounting Adapter

为了发挥声发射传感器本来的性能，必须安装于被测定物上使声发射信号能高效传递。一般将AE传感器粘接固定于被测定物上，但对于绝缘型传感器，由于其接受面是氧化铝而拆卸时容易破损，故不适应于除永久固定方法以外的其他方法。

The AE sensor must be mounted to the subject being measured in such as way that the AE signals are efficiently transmitted, allowing the sensor to work at its best level of performance.

AE sensors are usually bonded to the subject; however, with insulated sensors where the wear plate is alumina, there is the risk of breakage when the sensor is removed. These sorts of sensors should be used in applications where they will be permanently mounted.

磁吸附座

Magnetic holders

型号 Model name	适合传感器 Usable sensor types	吸附力 N Attaching force	使用温度范围 ℃ Temperature range	形状 mm Size	弹簧压力 N (minimum) Spring force	质量 gm Weight
① MX-40S	S	80	-20~+80	φ40×43H	20	270
② MX-40D	D	80	-20~+80	φ40×43H	20	270
③ MX-15	A, AD	100	-20~+80	φ25×30H	15	46
④ MX-16	A, AD	50	-20~+80	φ25×27H	10	31
⑤ 1045SA-MH	1045SWA	80	-20~+80	φ40×54H	20	260

螺钉安装夹具

Screw-mounted holders

型号 Model name	适合传感器 Usable sensor types	形状* mm Size	弹簧压力 N (minimum) Spring force	质量 gm Weight
⑥ BHS-20	D, S, AE204SW	φ28 (56) ×42H	20	140
⑦ BHS-8	A	φ18 (38) ×30H	10	39
⑧ 1045SA-SH	1045SWA	φ28 (56) ×52.5H	20	150

※ () 内为法兰盘尺寸 Dimension of flange

波导杆

Wave guide

型号 Model name	适合传感器 Usable sensor types	安装方法 Methods of attachment	形状 mm Size	质量 gm Weight
⑨ WG-0001-0312	S, D, 其它 Others	焊接 Weld	长 Length 500	
⑩ MH-1MB	S, D, 其它 Others	磁铁 Magnet	长 Length 160	

